

In-Ear monitoring system

PEOPLE GUIDE-SYSTEM

RCS[®]
AUDIO-SYSTEMS



- Ideally suited for:
- In-Ear Monitoring ■
 - Multilingual conferences ■
 - Mobile device to guide people ■

FREQ
16

wireless
((()))

CE 0336



- 2-channel system
- Mono/stereo operation
- 2 switchable MIC/line-inputs on combo-jacks (XLR, catch)
- 2x Line-Out for cascading or recording
- Mobile device to guide people

Description of the system

Whether on stage, while broadcasting or at multilingual conferences: the latest, multifunctional monitoring system will convince you of its functionality.

This sensational 2-channel technique enables you to listen into two programmes at the same time. Therefore it is possible to induct a microphone signal and induct accompanying music as well. The mono/stereo operation enables the programmes to be mixed or to transfer the signal to the headphones separately.

Description of the transmitter

The transmitter WT-016 operates with 16 frequencies. Up to 6 systems can be operated simultaneously. This characteristic is a great advantage in case a conference will be broadcasted in many languages.

The antenna is mounted on the rear cover via a TNC-compound and can be removed any time. In case you should decide to mount the device into a 19" rack, it is possible to mount the antenna on the front panel, using a special mounting-set.

Description of the receiver

The receiver BR-016 D is due to its' diversity system very much able to ensure perfect reception even in a somewhat problematic rooms with reference to transmission. The coverage of the systems improves dramatically.

Characteristic of the equipment of the BR-016 D:

- 16 frequencies in order to build multichannel systems or to switch to another frequency, which is free of disturbance.
- Record-out 3.5 mm, to connect a recording device.
- Battery- or rechargeable battery operation.
- Includes a charging connector in order to comfortably charge the rechargeable battery (charging via a UHF-system WR-701/WR-702 or mains supply 12 V, 500 mA).
- State of battery- and charging status control LED.
- In connection with the transmitter WH-016/WB-016 it can be used as a mobile device to guide people.
- Ear-phone output 3.5 mm, e.g. for IEP-100 or SHP-300.



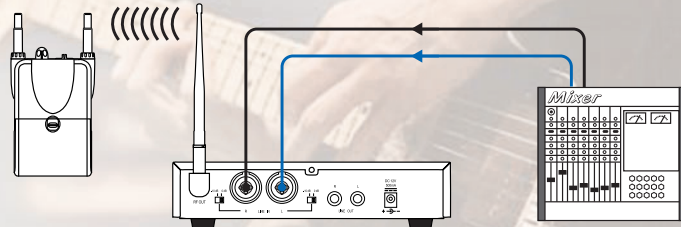
Picture shows SHP-300

UHF-Transmitter, 16 frequencies (794-813 MHz)	WT-016
UHF-Receiver, 16 frequencies (794-813 MHz)	BR-016 D
In-Ear Phone, (stereo)	IEP-100
Stereo Head Phone, (stereo)	SHP-300

Enables perfect monitoring on stage, and the purchase of very expensive monitors belongs to the past, as well as continuous danger of acoustic feedback.

Thanks to the mono-mix/stereo control, the user can listen into the accordingly adjusted audio signal as and when required.

Example of use: IN-EAR MONITORING



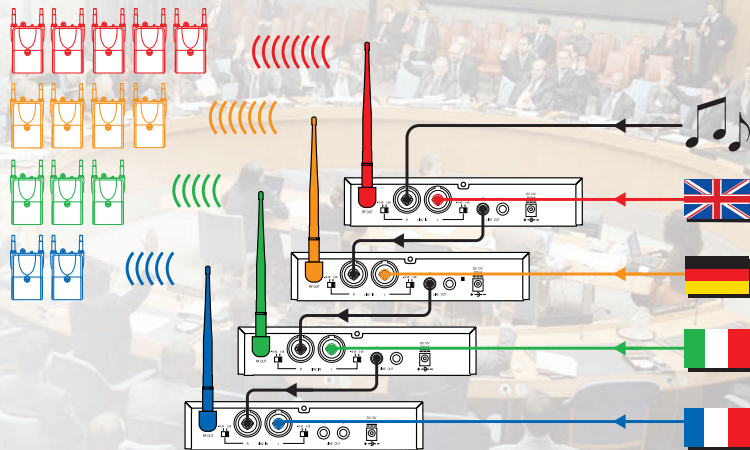
Recommended articles:

- WT-016** (transmitter)
- BR-016 D** (receiver)
- IEP-100** (In-Ear phones)

Use the monitoring system in order to assemble multi-channel devices.

A diverse number of programmes can be transmitted simultaneously on to any amount of receivers.

Example of use: MULTILINGUAL CONFERENCES



Recommended articles:

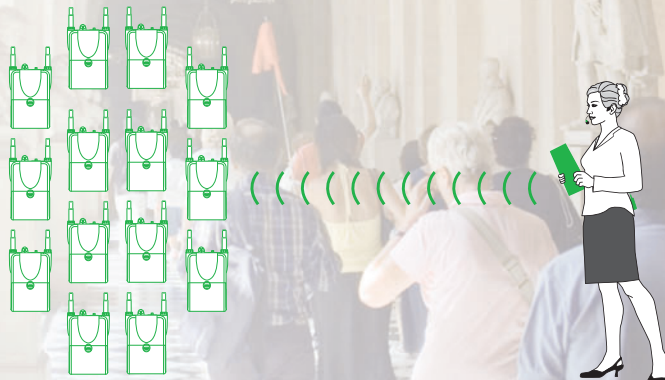
- WT-016** (transmitter)
- BR-016 D** (receiver)
- IEP-100** (In-Ear phones)

Each in the corresponding amount of devices

Whether for museums, business premises or for guided tours, the combination of the receiver BR-016D and the hand- or pocket transmitter WH-016/WB-016 add up to the perfect mobile device to guide people.

This kind of acoustic sounding turned out to be the most suitable for, i.e. guided tours that take place in especially noisy environments.

Example of use: MOBILE DEVICE TO GUIDE PEOPLE



Recommended articles:

- WH-016** (hand microphone) or
- WB-016** (bodypack) with HS-200 (headset) or LA-200 (lavalier)
- BR-016 D** (receiver)
- SHP-300** (head phones)

Each in the corresponding amount of devices

RCS IN-EAR SYSTEM

Accessories

19"-Rack Mounting Set

for antenna front assembly

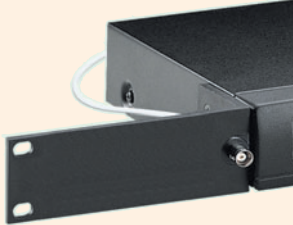


19" brackets to assembly the antenna at the frontside of the device.

Mounting-Set . RU-203 T
for 2 pcs. WT-016

19"-Rack Mounting Set

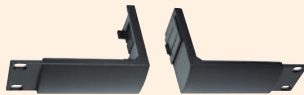
for antenna front assembly



19" brackets to assembly the antenna at the frontside of the device.

Mounting-Set . RU-101 T
for 1 pcs. WT-016

19"-Rackmount Set



19" brackets for one Receiver unit WT-016 (1 RU).

19"-Rackmount Set **RU-201**
1 RU, for 1 pcs. WT-016

Technical Data	UHF-Transmitter WT-016
Frequency range	794 – 813 MHz (16 frequencies)
Transmission method	PLL Synthesized
RF Power Output	max. 10 mW
Audio-Input MIC	XLR, bal. -30 dB (L/R)
Audio-Input LINE	Jack 6,3 mm, unbal. 0 dB (L/R)
Audio-Output LINE	Jack 6,3 mm, unbal. 0 dB (L/R)
Output ear phones	Jack 6,3 mm
Max. Hub	± 48 kHz
Audio frequency range	100 Hz – 12 kHz
Power supply	12V DC / 500 mA
Range	50 – 70 m
Dimensions / Weight	W 210 mm x H 44,3 mm x D 175 mm; approx. 1 kg

Technical Data	UHF-Receiver BT-016 D
Frequency range	794 – 813 MHz (16 frequencies)
Function type	Diversity
Signal-to-noise ratio	> 94 dB
Audio frequency range	100 Hz – 12 kHz
Audio output Line	-10dB
Output ear phones	3,5 mm, 30mW
Charging Input	12V DC / 500 mA
Max. Hub	± 48 kHz
Power supply	2x Mignon (1,5V; AA) or Accus
Range	50 – 70 m
Dimensions / Weight	W 106 mm x H 30 mm x D 70 mm; ca. 200 g

*